



Public Information/Cultural Resources Committee Workshop

August 15, 2012



**Florida Department of
Transportation
District One**

**SR 542 from 1st Street to E. of
Buckeye Loop Road
Winter Haven, Polk County**

**FPID# 410666-2-32-01
FAP# 2241-006-P**



AGENDA

I. INTRODUCTIONS

II. PROJECT BACKGROUND

III. CURRENT PROJECT ACTIVITIES

IV. QUESTIONS/COMMENTS



I. INTRODUCTIONS

- A. Lake Elbert Lakefront Property Owners/Local Concerned Citizens**
- B. Federal Highway Administration (FHWA) Staff**
- C. Florida Department of State – Division of Historical Resources
State Historic Preservation Office (SHPO) Staff**
- D. City of Winter Haven Staff**
- E. Florida Department of Transportation (FDOT) Staff
(Bartow/Tallahassee)**
- F. Project Design Team Representatives**



DEFINITIONS/ACRONYMS

Project Development & Environment Study (PD&E)

Section 106 – National Historic Preservation Act

National Register of Historic Places (NRHP)

Cultural Resources Assessment Survey (CRAS)

Historic American Building Survey (HABS)



DEFINITIONS/ACRONYMS (cont.)

Section 4(f) – U.S. Department of Transportation Act

Memorandum of Agreement (MOA)

Environmental Assessment – Finding of No Significant Impact (EA/FONSI)



II. PROJECT BACKGROUND

- A. Why are we here tonight?**
- B. Public & Agency Coordination during the PD&E Study**
- C. PD&E Documentation/Requirements for Coordination**



II.B. Public & Agency Coordination during the PD&E Study (April 2005 – July 2009)

- 1. 4 meetings with City of Winter Haven Development Review Committee (DRC)**
- 2. 4 Stakeholder Advisory Committee meetings**
- 3. 3 Cultural Resource Committee (CRC) meetings**
- 4. 1 Public Workshop**
- 5. 1 Public Hearing**
- 6. 3 newsletters**
- 7. Project Web site**



II.C. PD&E Documentation/Requirements for CRC Coordination

1. CRAS completed (April 2006)
2. SHPO “*may affect*” letter (May 2006)
3. Section 106 Documentation and Determination of Effects (June 2007)
4. SHPO concurrence with project effects (August 2007)
5. Public Hearing (March 2008)
6. **Section 106 MOA (March 2009)**
7. **Section 4(f) Evaluation (July 23, 2009)**
8. **EA/FONSI (July 23, 2009)**



II.C. PD&E Documentation/Requirements for CRC Coordination

9. Mitigation Measures Outlined in the Section 106 MOA

- a. Design and Construction of the Project**
 - Access and connectivity between the South Lake Elbert Historic District and the Lake Elbert waterfront
 - Historic district markers
- b. Preparation of the South Lake Elbert District NRHP nomination**
- c. HABS Documentation of 35 South Lake Elbert Drive South**



II.C. PD&E Documentation/Requirements for CRC Coordination

PD&E Commitments



FDOT will adhere to the following commitments with regard to the proposed improvements to SR 542:

1. Based on extensive coordination with the City of Winter Haven, FDOT recognizes the City's concerns regarding the water quality of Lake Elbert and is committed to the protection of the environmental quality of the lake and adjoining area. FDOT commits to treating 100 percent of the S.R. 542 roadway: the new impervious area associated with the proposed S.R. 542 project; and the existing impervious area associated with S.R. 542 within Segment B, the Lake Elbert area. FDOT commits to coordinate with the City of Winter Haven during the final design phase of the stormwater management system for Segment B at Lake Elbert.

2. Currently, lakefront residents with riparian rights within the South Lake Elbert Historic District have, or can place, irrigation pumps in Lake Elbert for the purpose of maintaining their lawns and landscaping. Subject to compliance with the Southwest Florida Water Management District regulatory and permit rules, and in cooperation with the Lake Region Lakes Management District (LRLMD), FDOT will evaluate these elements as appropriate so that this activity may continue after the reconstruction of the S.R. 542 roadway.

3. FDOT will coordinate with the LRLMD during the final design phase of the S.R. 542 project with regard to maintaining access to the LRLMD lake level (outfall) structure located within Segment B at Lake Elbert.

4. FDOT will evaluate the potential for a median wider than 22 feet in Segments D and E during the final design phase of the S.R. 542 project.

5. FDOT will commit to coordinate with the City of Winter Haven to review and assess wetlands mitigation options during the design and permitting phase of the project.

6. FDOT will construct the Project within the right-of-way and elevations delineated on the Preferred Alternative Concept Plans (Plans), selected after the Public Hearing, subject to alterations that may be necessary during further Project design to achieve the Project's purpose.

7. The Project right-of-way and elevations delineated in the Plans have been designed with the goal of minimizing adverse effects on the historic resources identified in the document entitled "Section 106 Documentation and Determination of Effect for SR 542 from 1st Street in Winter Haven to US 27 in Dundee, Florida." FDOT will ensure that this goal continues to be observed as Project design proceeds.

8. In order to maintain physical access to Lake Elbert for lakefront property owners within the South Lake Elbert Historic District with riparian rights, the FDOT will evaluate design elements for individual property access.

9. Visual connectivity between the lakefront residences and Lake Elbert will be maintained through the use of design elements, which will continue to provide a vista of the lake. These design elements may include lower barriers or incorporating railings that are not solid and allow for some transparency. FDOT will also commit to higher levels of aesthetic treatment within the South Lake Elbert Historic District for crossings, surface design, landscaping, railings, benches, sidewalks, trash receptacles, and lighting. Design elements of the Plans resulting from the Public Hearing will be further developed in the Design Phase.

The Cultural Resources Committee (CRC) will be involved at the appropriate stage to review these design elements. The CRC is comprised of the agencies, organizations and affected parties that focus on the Section 106 of the National Historic Preservation Act process and the significant resources affected by the proposed project improvements. Committee members include FDOT, FHWA, SHPO, City of Winter Haven, and affected residents of the historic district.

10. FDOT will notify FHWA, who in turn will notify the Florida SHPO and the Advisory Council on Historic Preservation (Council), of any substantive alteration in the Project design that could result in adverse effects to historic resources not previously addressed during the course of consultation, and afford each the opportunity to consider amending the agreement.

11. FDOT will provide signage or markers along SR 542, as appropriate, identifying the South Lake Elbert Historic District once it is designated in the NRHP.

12. In order to mitigate effects to the South Lake Elbert Historic District, a NRHP Nomination will be prepared by FDOT and submitted by the City. Qualified cultural resources consultants, who meet the Secretary of the Interior's Professional Qualifications Standards for Archaeology and

Historic Preservation (Code of Federal Regulations 36 CFR Part 61), will conduct a survey of the historic resources (to include the preparation of Florida Master Site File forms). The mitigation activities in the executed MOA, Stipulations IA.1 and 2, will commence after the final environmental document and receipt of Location Design Concept Acceptance from the FHWA for the improvements to this segment of SR 542 and will be submitted to the Florida Division of Historical Resources Survey and Registration Section for review within 18 months.

13. Upon completion of the survey work, a complete NRHP nomination form will be prepared according to National Register Bulletins 16A and 16B, "How to Complete the National Register Registration Form" and "How to Complete the National Register Multiple Property Documentation Form" (U.S. Department of the Interior, National Park Service, 1991) and will be submitted, with appropriate background materials, to the Florida Division of Historical Resources Survey and Registration Section.

FDOT will respond to comments received from the Florida Division of Historical Resources Survey and Registration Section on the submitted NRHP nomination form.

Upon FDOT's completion of the formal nomination proposal process, FDOT will provide a copy of the NRHP nomination form, and background materials to the City for their use to proceed with the formal nomination proposal process through the Florida Department of State division of Historical Resources Survey and Registration Section.

14. Pursuant to Section 110(b) of the National Historic Preservation Act, FDOT will complete the following HABS Level III documentation for 35 Lake Elbert Drive South, which will be a full acquisition as part of this project, before allowing the historic building to be demolished:

1. Drawings-sketch drawing.
2. Photographs Photographs with large-format negatives of exterior and interior views.
3. Written Data short form for historical reports.

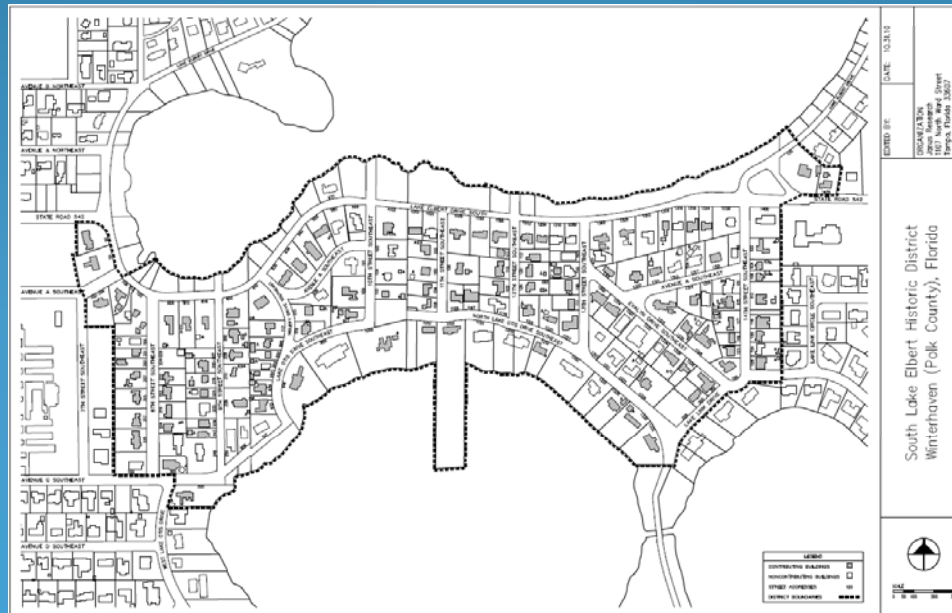
15. The HABS Level III documentation will commence with the design contract for the improvements for this segment of SR 542 (Segment B) and FHWA will file copies of the HABS Level III documentation prepared pursuant to the MOA with the City of Winter Haven for archiving within 18 months.



III. CURRENT PROJECT ACTIVITIES

A. Recent History

1. FDOT sent draft NRHP Nomination to City of Winter Haven (February 2011)





III. CURRENT PROJECT ACTIVITIES

A. Recent History

- 2. Cultural/historical resources fieldwork completed (November/December 2011)**
- 3. CRAS update completed (July 2012)**
- 4. FDOT sent CRAS update to FHWA (July 2012), will be forwarded to SHPO (August 2012)**



III. CURRENT PROJECT ACTIVITIES

A. Recent History

- 5. Preparation of the HABS of 35 S. Lake Elbert Drive is currently underway**





III. CURRENT PROJECT ACTIVITIES

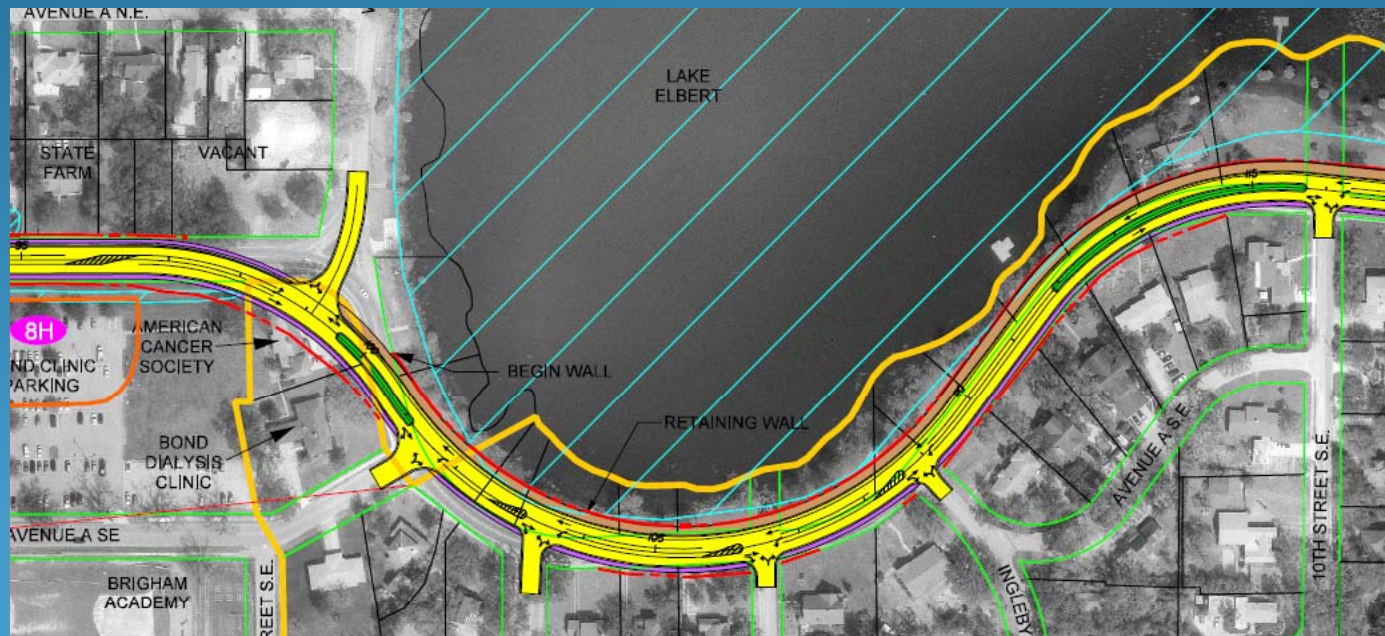
B. Current Proposed Design

- 1. Roadway (Approved PD&E vs Current Design)**
- 2. Landscaping Concept**
- 3. Summary of Changes**



III. CURRENT PROJECT ACTIVITIES

1. Approved PD&E Roadway Alignment (west half)





III. CURRENT PROJECT ACTIVITIES

1. Current Proposed Roadway Alignment (west half)





III. CURRENT PROJECT ACTIVITIES

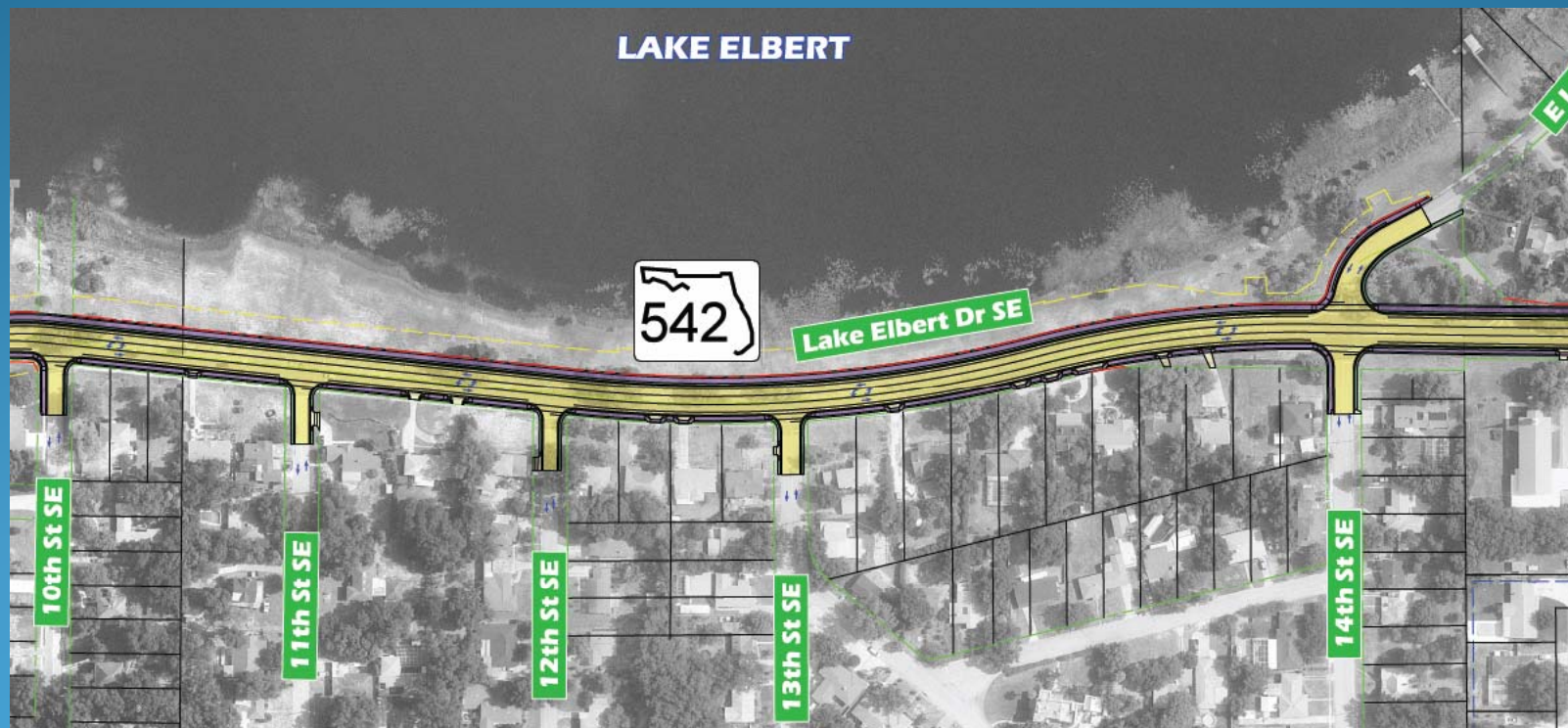
1. Approved PD&E Roadway Alignment (east half)





III. CURRENT PROJECT ACTIVITIES

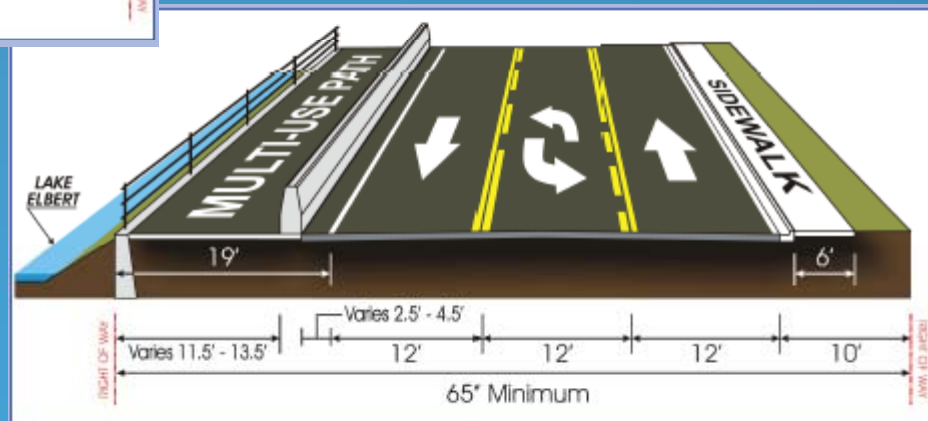
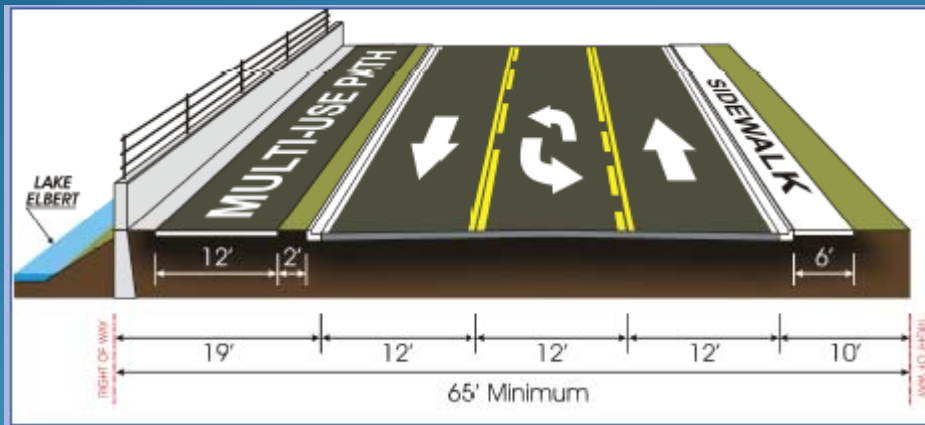
1. Current Proposed Roadway Alignment (east half)





III. CURRENT PROJECT ACTIVITIES

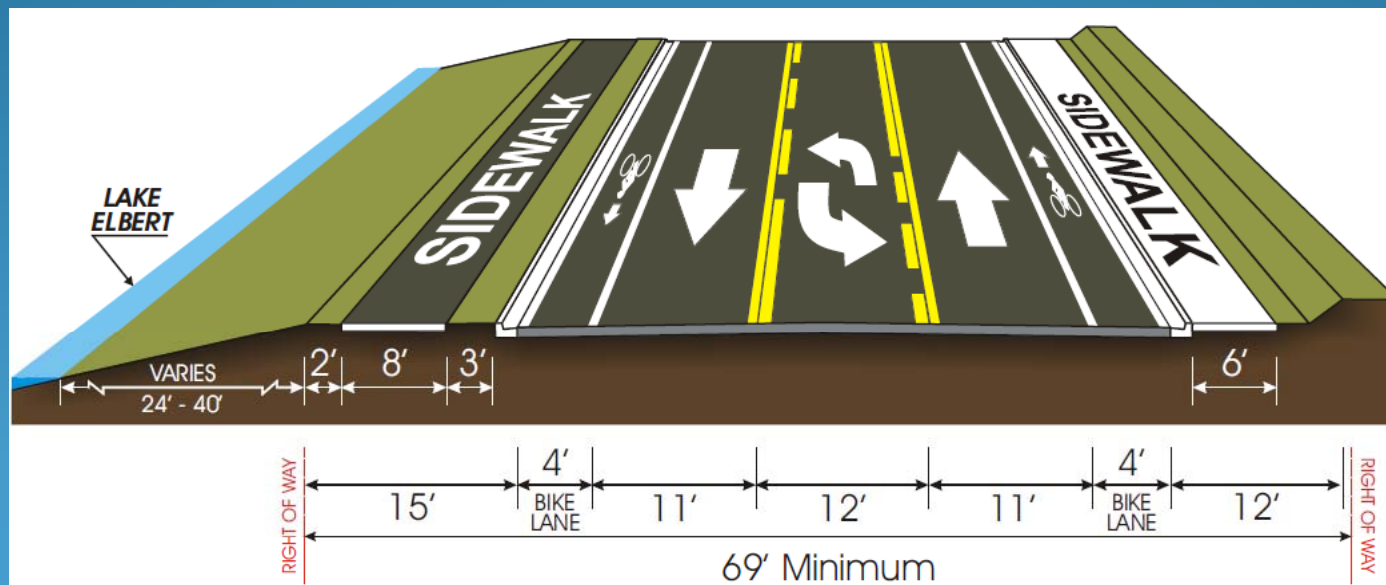
1. Approved PD&E Roadway Sections





III. CURRENT PROJECT ACTIVITIES

1. Current Proposed Design Roadway Section





III. CURRENT PROJECT ACTIVITIES

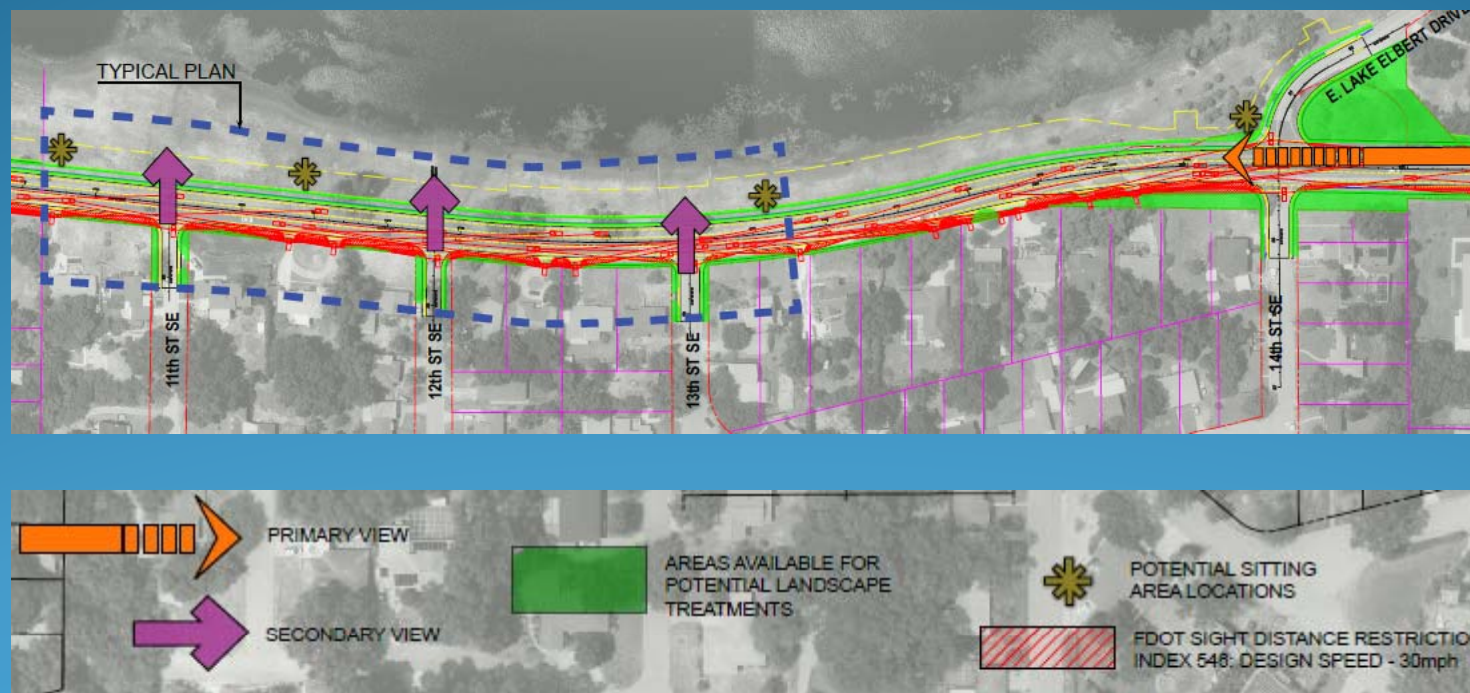
2. Landscaping Concept (west half)





III. CURRENT PROJECT ACTIVITIES

2. Landscaping Concept (east half)





III. CURRENT PROJECT ACTIVITIES

2. Landscaping Concept





III. CURRENT PROJECT ACTIVITIES

2. Landscaping Concept (visual rendering)





III. CURRENT PROJECT ACTIVITIES

2. Landscaping Concept (amenities)





III. CURRENT PROJECT ACTIVITIES

2. Landscaping Concept (plant palate)





III. CURRENT PROJECT ACTIVITIES

2. Landscaping Concept (plant palate)





III. CURRENT PROJECT ACTIVITIES

3. Summary of Changes within the Historic District

a. Remove wall and pathway railing

- more open, flowing design
- preserve existing lake access
- enhance views from previous PD&E concept
- anticipated project cost savings

b. Enhanced pedestrian amenities and landscaping



III. CURRENT PROJECT ACTIVITIES

3. Summary of Changes within the Historic District

c. Added two 4-foot bike lanes

- slightly wider footprint (total of 4 feet)
- minor traffic lane width reduction (-1 foot each in EB & WB direction)
- reduced multi-use path width to 8-foot asphalt sidewalk (-4 feet)



III. CURRENT PROJECT ACTIVITIES

C. Next Steps

1. City of Winter Haven

- a. Will have at least one more meeting with affected property owners regarding NHRP designation (Summer/Fall 2012)**
- b. Present NHRP designation to the City Commission and submit to SHPO (Winter 2012/Spring 2013)**



III. CURRENT PROJECT ACTIVITIES

C. Next Steps

2. FDOT

- a. Will review comments received and incorporate where feasible into continued development of design plans**
- b. Future CRC meeting and Public Hearing as needed (dates TBD)**



IV. QUESTIONS/COMMENTS?

Opportunities for public input

- Oral comments
- Comment sheets (drop-box or mail-in)
- E-mail/phone